

Additional Core Services at ADI:

Molecular Biology: MBioCore

- Access to a wide suite of analytical and sample prep instrumentation
- Nucleic acid isolation, gene expression and recombinant proteins

Contact: Kuni Suzuki (780) 492-8396

Immunology: ImmunoCore

- Cell sorting/flow cytometry
- Cell/small animal irradiation
- Protein analysis
- Antibody biobar

Contact: Colin Anderson (780) 492-6036

In Vivo Modeling: InVivoCore

- Transplant models
- Hormonal Assays

Contact: Gina Rayat (780) 492-6894

Histology: HistoCore

- Paraffin processing and embedding
- Cryosectioning and staining
- IHC/IF

Contact: Sheena Lesyk (780) 492-0387

www.adi.ualberta.ca/coreservices

Cell Imaging Centre at ADI
5-010B Li Ka Shing Building, 8700 112th Street, U of A Campus, Edmonton, AB
T: (780) 492-9475
Contact: Greg Plummer
E: gplummer@ualberta.ca

Cell Imaging Centre at ADI

For further information on Cell Imaging Centre at ADI contact:

Dr. Patrick MacDonald, Core Director
6-126C Li Ka Shing Centre for Health Research Innovation
University of Alberta
Edmonton, AB T6G 2E1
Ph: (780) 492-8063
Email: pmacdonald@ualberta.ca



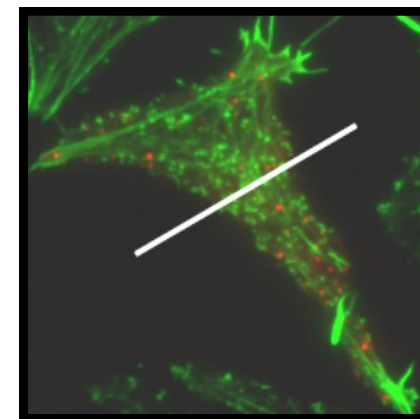
Leading the world in the prevention, treatment and cure of diabetes.

Book online:
www.adi.ualberta.ca/coreservices/imagecore



***Core Services:
Cell Imaging***

**Cell Imaging
Centre at ADI
(operated by FoMD)**



5-010B
Li Ka Shing Centre
for Health Innovation
8700 112th Street
University of Alberta Campus
Edmonton, AB
T: (780) 492-9475
E: gplummer@ualberta.ca

Cell Imaging Centre at ADI is a campus-based fee-for-service lab that offers a comprehensive array of equipment and services related to the imaging and analysis of live or fixed cells and tissues. Cell Imaging Centre can process your samples for you, or use their technical expertise to assist you with training and method development on a wide range of equipment. The ADI facility is a satellite of FoMD Cell Imaging Centre.



Services

Cell Imaging Centre at ADI can provide full services for sample imaging and analysis using the following equipment:

- Perkin Elmer Spinning Disc Confocal
- Zeiss COLIBRI fast LED imaging and optical sectioning
- Zeiss PALM Microbeam laser capture microdissection
- Zeiss Axio Cam Imaging Station
- Perkin Elmer Volocity Visualization system

*** full technical assistance \$60/h ***

Cell Imaging Centre at ADI
 5-010B Li Ka Shing Building, 8700 112th Street, U of A Campus, Edmonton, AB
 T: (780) 492-9475
 Contact: Greg Plummer
 E: gplummer@ualberta.ca

Instrumentation Use (unassisted)

Perkin Elmer Spinning Disc Confocal Microscope	\$40/hr
Zeiss COLIBRI fast LED imaging and Optical sectioning	\$30/hr
Zeiss PALM Microbeam laser capture Microdissection	\$30/hr
Zeiss Axio Cam Imaging Station	\$10/hr
Perkin Elmer Volocity Visualization System	\$10/hr

Training on above instrumentation is available and is mandatory for first-time users. Contact Greg Plummer to arrange for training.

www.adi.ualberta.ca/coreservices/imagecore

*** See "Instructions for accessing facility and using equipment" ***

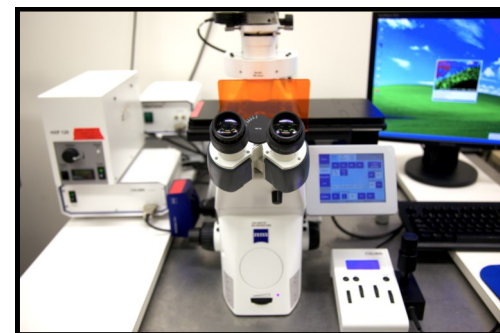
Technical Assistance

Technical training for instrumentation self-use as well as assistance on procedures and method development from highly qualified staff is available at a rate of \$60 per hour.



Instructions for access and using equipment:

- Training on equipment is mandatory for first-time users. Contact Greg Plummer to arrange for training (see below)
- Cell Imaging Centre at ADI is located in a card-access secure area (5-010B, Li Ka Shing Bldg). Clients requiring access to the facility on a regular basis can arrange to have card access granted.
- For self-directed use of instrumentation, users must log their on/off time using forms provided - advance booking is advised. Cell Imaging Centre at ADI uses an online booking and logging system
- Instruments must be free of debris, spills or damage following use. Costs associated with cleaning or repairing instruments will be charged back to the user
- Regular hours for facility access are: 0900 - 16:00 Monday through Friday



Cell Imaging Centre at ADI
 5-010B Li Ka Shing Building, 8700 112th Street, U of A Campus, Edmonton, AB
 T: (780) 492-9475
 Contact: Greg Plummer
 E: gplummer@ualberta.ca