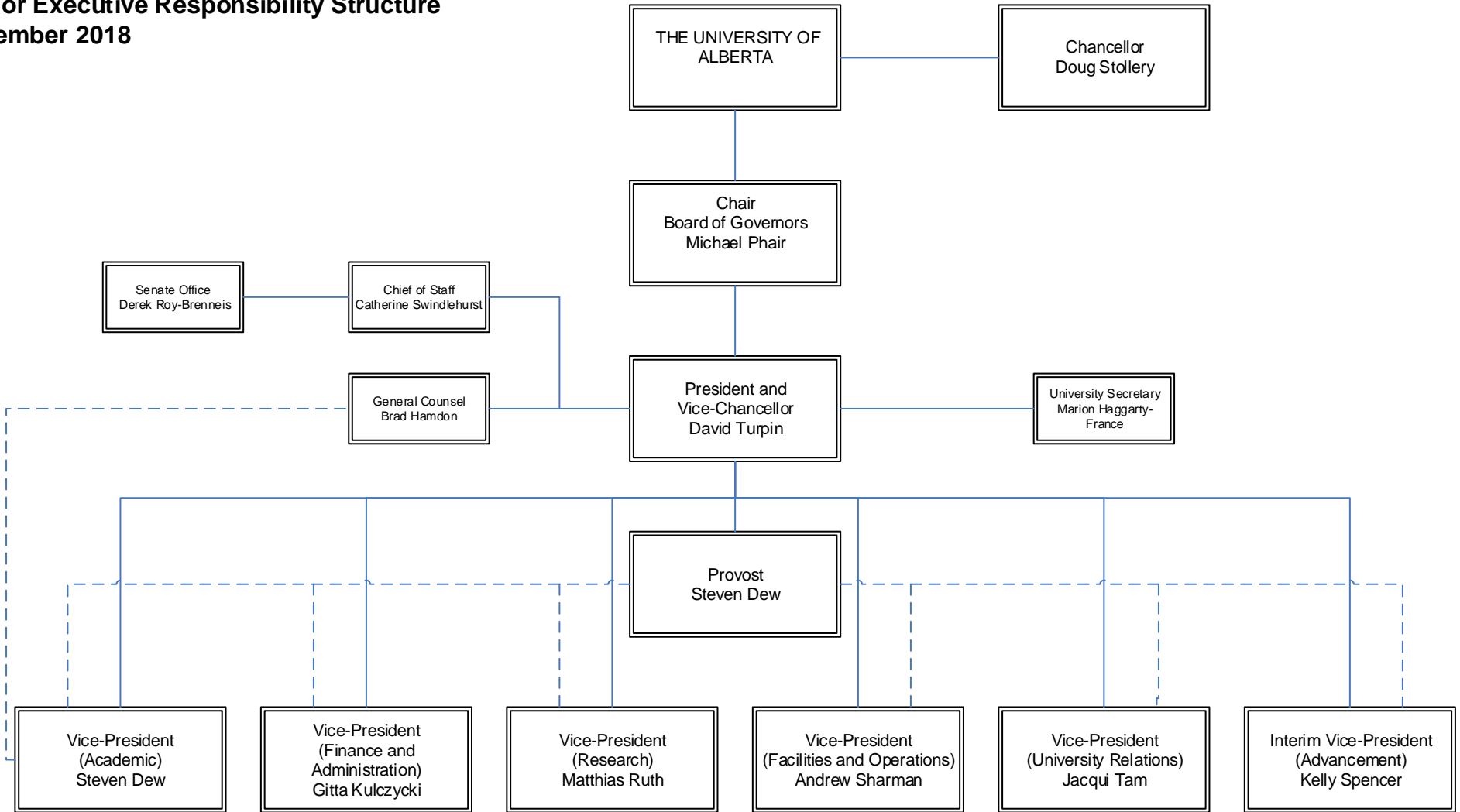


**Senior Executive Responsibility Structure  
December 2018**



**Notes:**

Dotted lines from the Provost to the Vice-President signify operational responsibility for coordinating portfolios' initiatives and implementing strategic/budget/policy decisions of the Board and President.

Other dotted lines signify dual reports.

To view a Vice-President's portfolio, please click on their name.