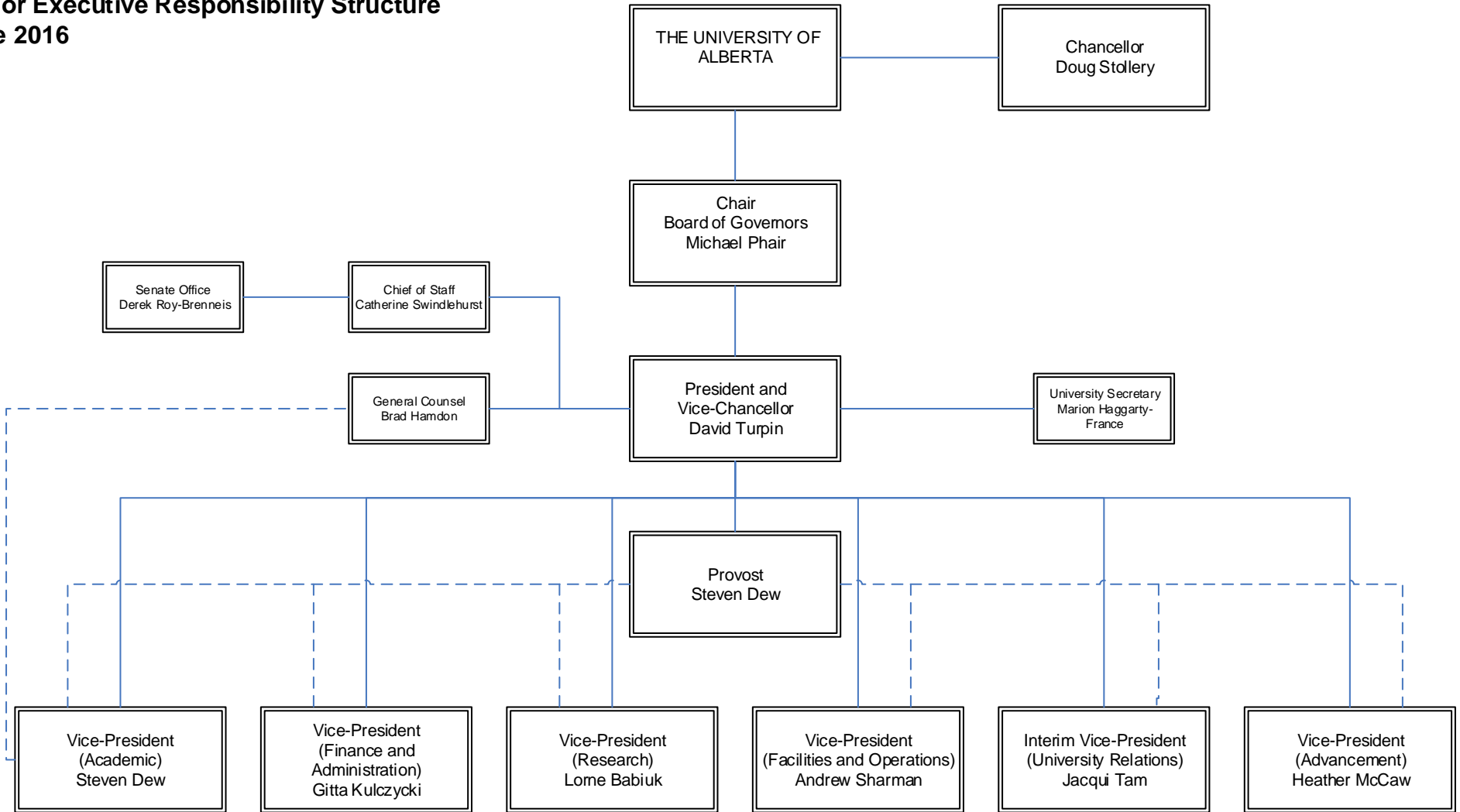


**Senior Executive Responsibility Structure
June 2016**



Notes:

Dotted lines from the Provost to the Vice-President signify operational responsibility for coordinating portfolios' initiatives and implementing strategic/budget/policy decisions of the Board and President.

Other dotted lines signify dual reports.

In order to see a Vice-President's organizational chart, please click on their name.